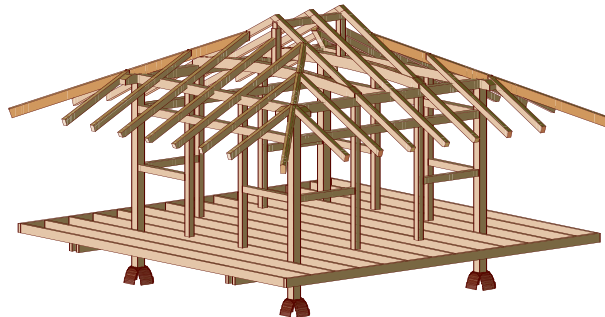
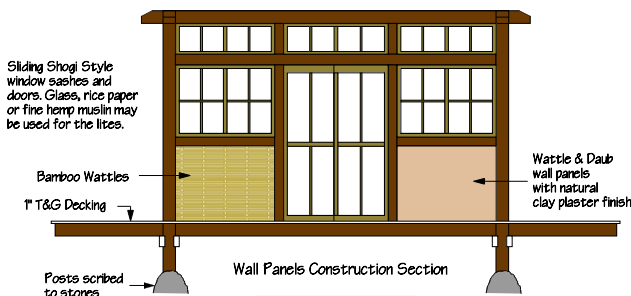


Ecosita Costa Rica

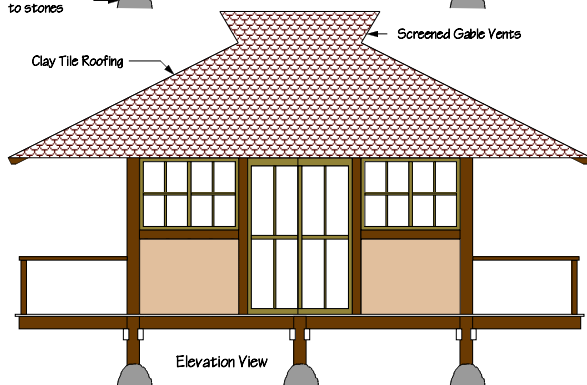
Hand Crafted Casitas and Cabinas



Isometric Frame View



Wall Panels Construction Section



Elevation View

16'x16' EcoSita



EcoSita was formed as a natural outgrowth of the efforts of Fox Maple School of Traditional Building's community building program, the Indigenous Peoples Community Building Initiative (IPCBI). IPCBI, a not-for-profit educational organization, began its program in Costa Rica in 2001, and has since developed a very talented group of craftsmen capable of producing some of the finest timber frame joinery in the world.



The key mission of the IPCBI is to help develop new and sustainable vernacular architectural models—and ultimately, employment opportunities—among indigenous and developing world communities so that they may take control of their built environment. The program in Costa Rica has been quite rewarding and it is now time to utilize the talent generated to provide truly ecological options to those wishing to build in the rapidly growing (and ecologically fragile) areas of Costa Rica.

We believe that by offering a viable model that represents a truly new vernacular option to steel and concrete, we may in some small way influence the nature of future development in Costa Rica.

Ecosita Costa Rica

For more information please send us an email:
info@ecositacr.com • www.ecositacr.com
San Luis de Monteverde, Puntarenas, Costa Rica
Ph. 26-45-81-70 or 83-58-49-03

Craftsmanship & style that complement the natural beauty of Costa Rica

Natural, Vernacular Designs

Vernacular designs are those that evolve naturally in direct relationship to the environment and its locally available resources, coupled with the social needs and cultural expression of the people.

Costa Rica is a country of bountiful and sustainable natural resources. Sadly however, it has nearly lost its vernacular sensibility and style, and now relies primarily on concrete and steel in its built environment.

EcoSita offers an ecological alternative by offering new vernacular designs that utilize plantation grown timber, bamboo, clay, and local craftsmen to construct high quality casitas and cabinas that will blend into the natural environment because they are built from the natural environment.

Traditional Joinery



Each EcoSita structure uses traditional hand crafted mortise & tenon joinery in the Japanese style. Both square dimension and natural curved timbers are used to best utilize the local resources

and to create an aesthetic balance. Posts are scribed and hand chiseled to fit precisely and securely to stone as if they had grown naturally from the stone. The joinery is pegged, using no nails or steel fasteners.



EcoSitas have a minimal impact on the building site as no excavation is required.



Sustainable Materials

Each EcoSita structure is built using locally available and sustainable materials. The timbers and wood come from the vast supplies of plantation grown trees that have been planted in Costa Rica over the past 30 years. The yearly thinning's represent a long-term and sustainable supply of wood. The wall systems are constructed using traditional wattle & daub. Wattle & daub is an ancient system that utilizes a wickerwork of bamboo woven over hardwood staves (wattles). A mixture of straw and clay (daub) is then worked into the wattles to provide a durable and natural wall finish.



A mixture of straw and clay (daub) is then worked into the wattles to provide a durable and natural wall finish.



The roofing uses natural clay tiles produced in small, family owned facilities in Nicaragua.



Completed wall system using wattle & daub and clay plaster.



Joinery and framing details follow traditional Japanese patterns.



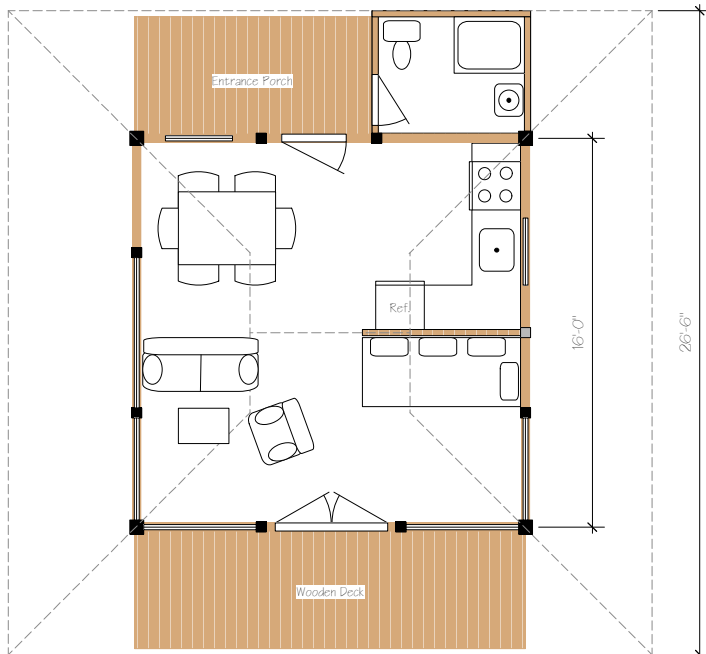


Hand Crafted Casitas and Cabinas

The Ecosita Model

Ecosita casitas are designed to provide a comfortable and natural living environment that maximizes both interior and exterior living spaces. The basic Ecosita model, *Ecosita de la Playa*, is 16'x16' (5x5 meters) and has 256 square feet (25m²) of interior living space, not including the bathroom. However, the generous roof overhangs with wooden decks and landscaped covered patio areas make the total covered footprint of over 26'x26' (8x8 meters), providing over 700 square feet (64m²) of combined interior and exterior living area.

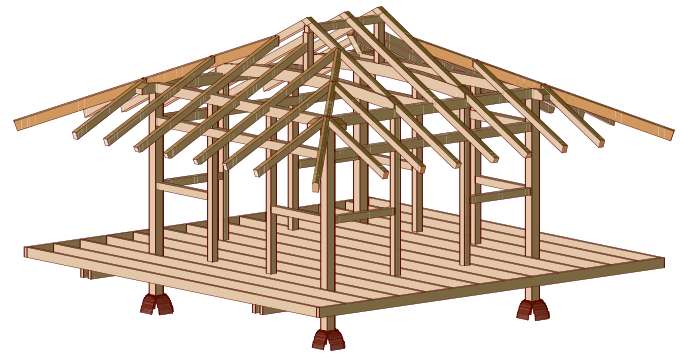
If more living space is required, the modular construction allows for multiple units to be built in clusters, around a beautifully landscaped courtyard, and connected via covered walkways. You may choose to have a central main structure for living and dining, another for a private bedroom, and another for a luxurious bathing facility. In this way, your ultimate Costa Rican dream space can be built in increments, and evolve as your dreams, budget and life requirements evolve.



Ecosita de la Playa

This is our basic model that provides up to 285 square feet (29m²) of indoor living space, including bathroom. The total footprint under roof is 26.5 x 26.5 feet, making a total of 700 sq. ft. (64m²) of combined indoor and outdoor living area. In Costa Rica, the building regulations and permitting process change dramatically when the living space exceeds 30 square meters. This model is designed to provide the maximum space and living comfort, and still remain under 30m². The bathroom and kitchen are optional, as you may choose to construct additional smaller Ecositas to provide these facilities.

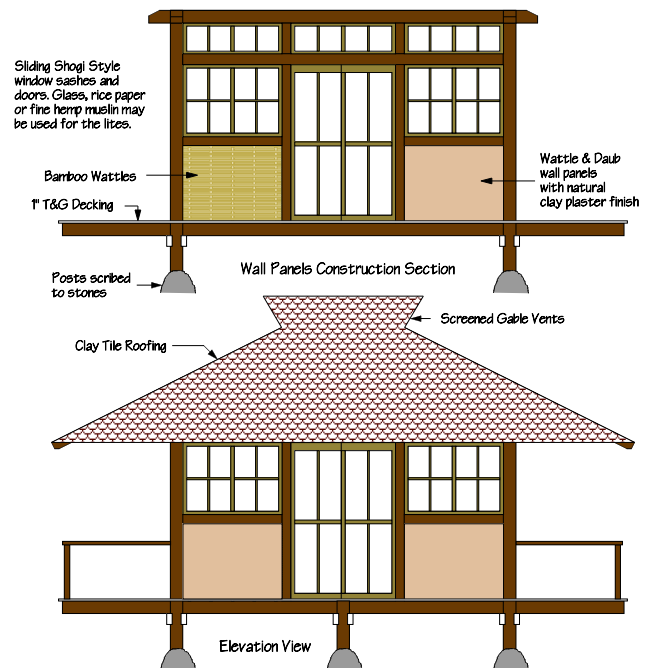
The base price for the 16x16 foot *Ecosita de la Playa* starts at \$30,000, not including bath or kitchen. Smaller models start as low as \$18,000. For complete pricing and construction options, please request information by contacting us via email at: info@ecositacr.com. A complete pricing and option info packet will promptly be sent via return email. If necessary, we can then arrange a meeting either at your site or our facility in San Luis to discuss your building options and set a construction schedule. In most cases, your Ecosita can be ready for delivery within 10 to 12 weeks after confirming your order and completed in an additional 3-4 weeks on site.



Isometric Frame View

The Timber Frame

The Ecosita timber frame is crafted by hand, using traditional mortise and tenon joinery in a Japanese style. The frame uses a variety of sustainably harvested tropical hardwood timbers, and is hand finished with natural oils. Essentially it is a large piece of furniture, and provides a stunning architectural aesthetic. You can choose to build an Ecosita using 100% teak for all timbers and wood components.



Enclosure & Finish

The wall system can be either natural wattle & daub, with clay plaster finish, or wood panels. The roofing is clay tiles, applied over a solid wood decking. Sliding, wooden sash windows and French doors are built in the Craftsman Style. The floor is a two layer system, with teak finish flooring. Exterior decking is also teak. The roof decking, doors and windows come standard using a variety of tropical hardwoods, however, you have the option to build your Ecosita using 100% teak, from frame to finish. The foundation system, using independent concrete piers, is included. Where permitted, you have the option to have the posts hand scribed and cut to fit directly to stone in the traditional Japanese fashion. The interior living space of the completed Ecosita is completely sealed from the exterior environment, allowing for a climate controlled living environment.

Each Ecosita package comes complete from foundation to roofing. This includes stamped and engineered plans. Local permits must be provided by owner. Electrical wiring and plumbing to internal systems and fixtures (if chosen as options) are included. However, electrical service, all exterior connections and equipment, septic and water systems must be provided by owner and carried out by a professional.

Ecosita's can be purchased in sizes from 12'x12' (4x4m) to 16'x 20' (5x6m). Custom designs and sizes will be considered upon request.